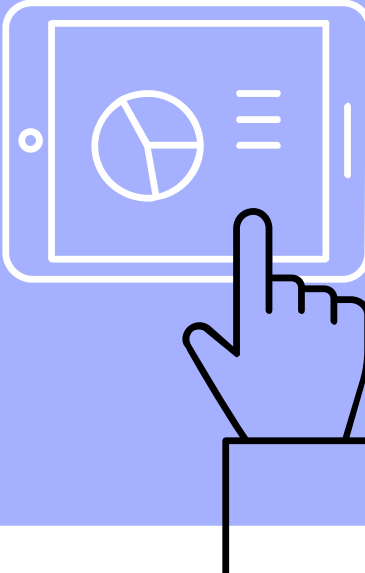
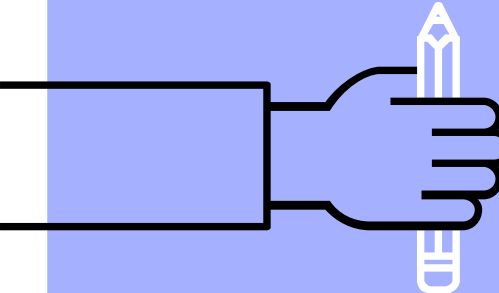


The COVID-19 Crisis: Updates on the Return to Yellow



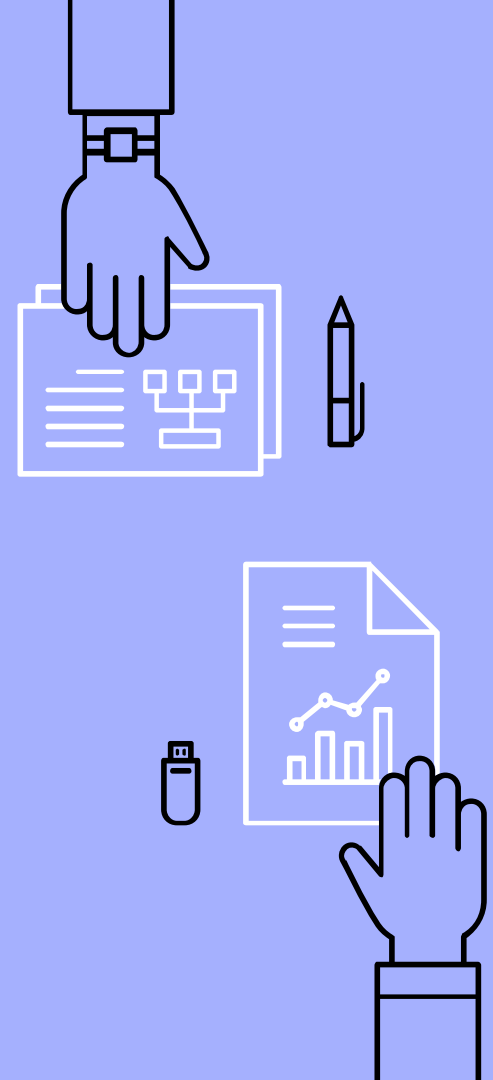
Jonathan Hart, Ph.D., Superintendent of Schools
February 23, 2021 Board Of Education Meeting

Our Talking Points

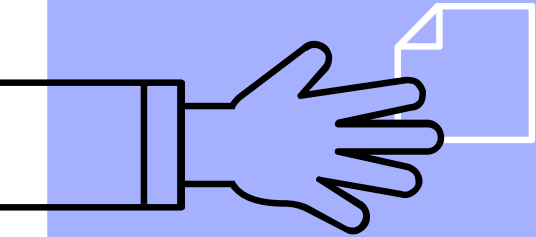
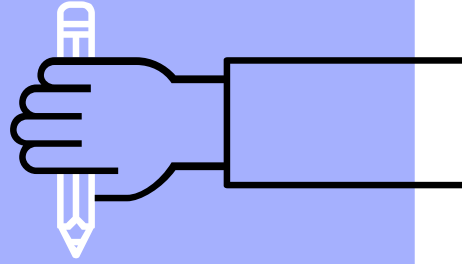
Current Attendance Numbers

Next Steps: Progress and Classroom
Set up

Metrics that we continue to watch.



1.
What is
enrollment looking
like?



Some Numbers

The table below illustrates the number of students who are virtual or in-person 4 days/week

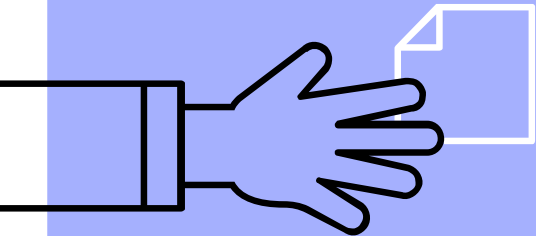
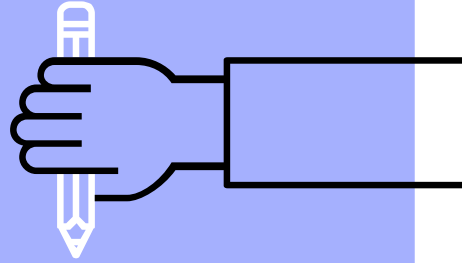
	RMS	HBS	TBS	WHS
Virtual	16%	16%	14%	17%
4 days	75%	84%	84%	80%

Note: Totals may not equal 100% as we continue to follow-up with families as of Friday, 2/19.



2.

What steps have
taken place to
expand
reopening?



A Return to Yellow

In order to expand reopening, the activity report must return to **yellow**. This represents a moderate COVID level.

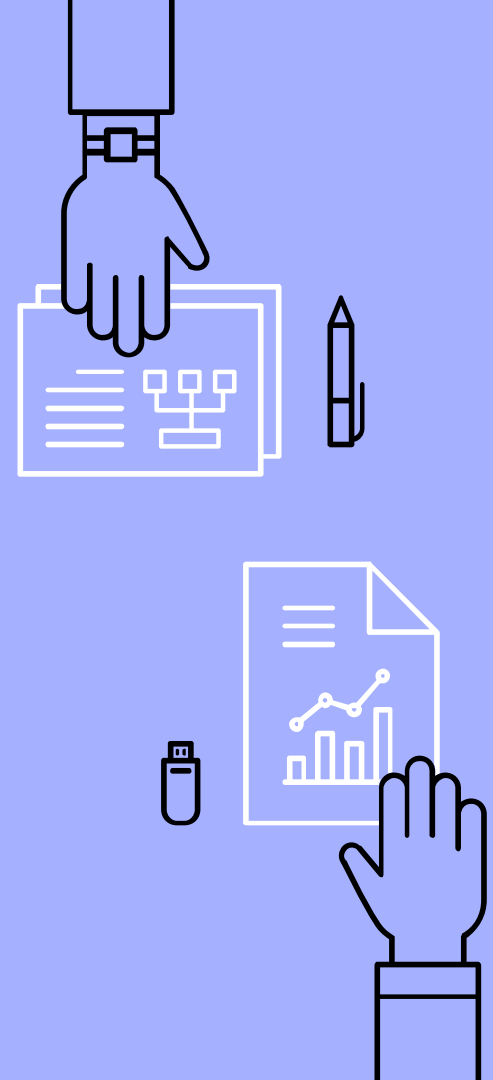
We will no longer be contact tracing presumptive positive cases.

This occurred with the activity report dated **February 6**.



Our Work in Making Plans

- ▶ Contacted other districts to learn about their protocols/procedures.
- ▶ Surveyed families to determine who would return to in-person instruction or virtual instruction.
- ▶ Completed classroom setup, moving desks into rooms.
- ▶ Revised transportation routes.
- ▶ Ordered desk barriers for all student desks.



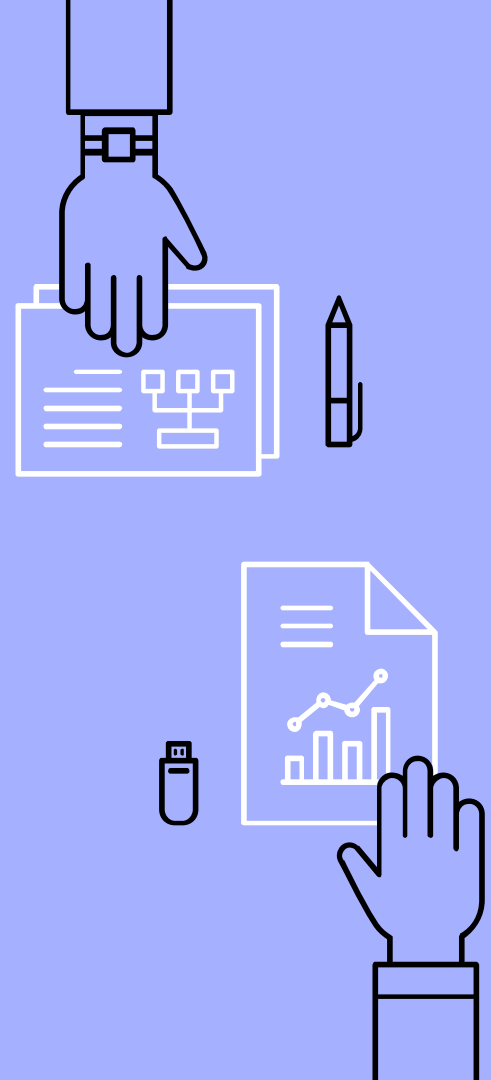
The 6 Foot Guideline

In the yellow phase of reopening, the 6 foot guideline will **not be possible** in all classrooms. There are 2 factors that will influence this:

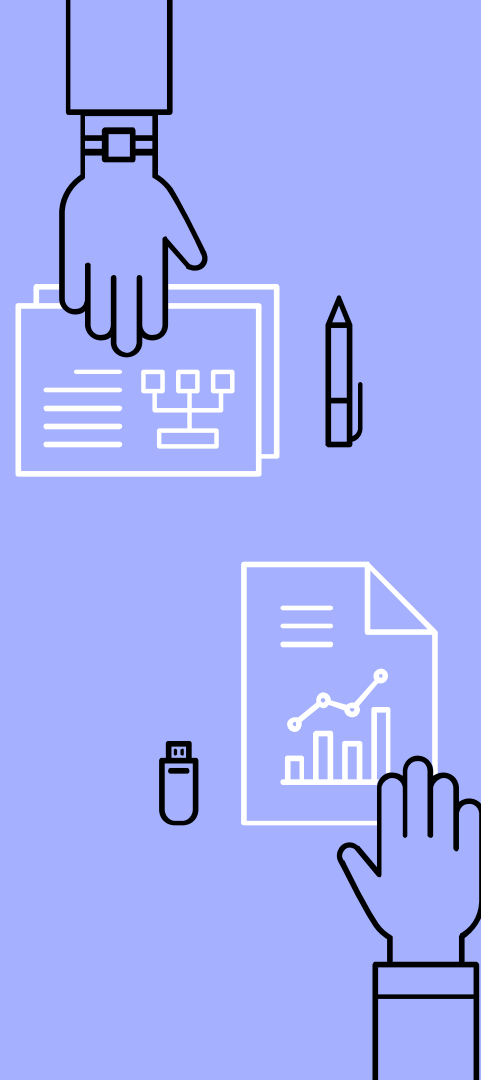
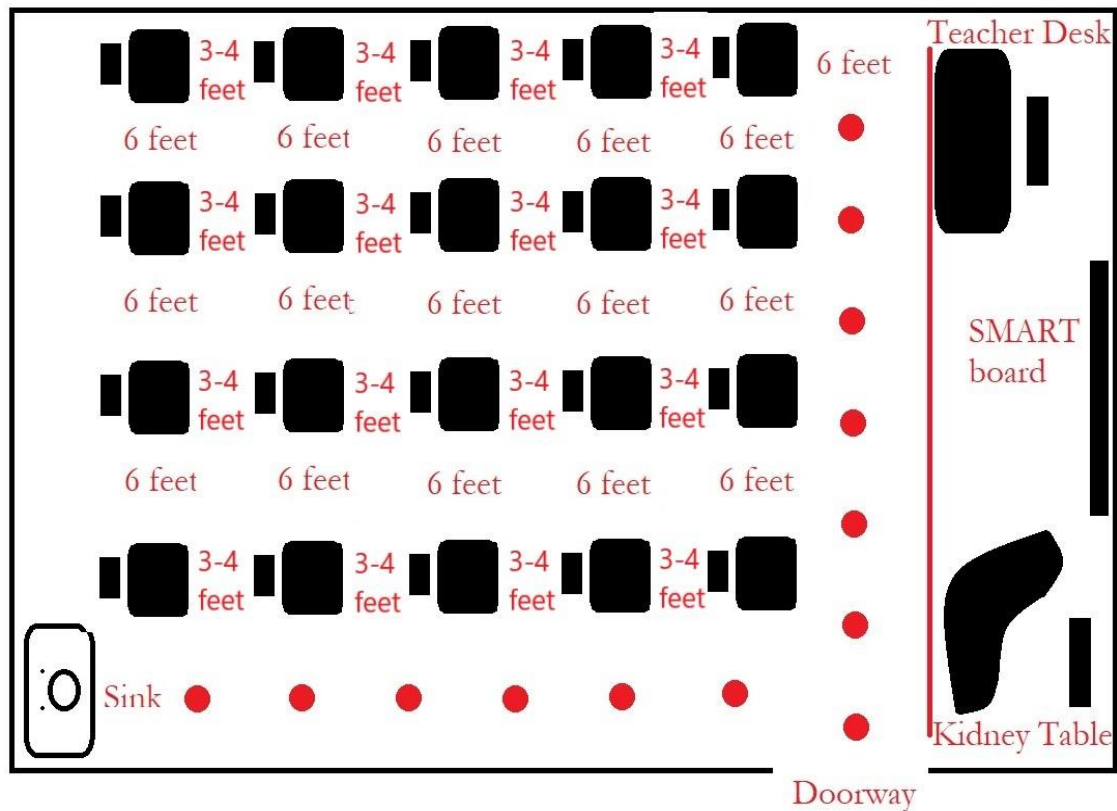
- ▶ Number of students who remain virtual and
- ▶ The size of the classroom

We anticipate being able to maintain **approximately 4 feet** of distance between students.

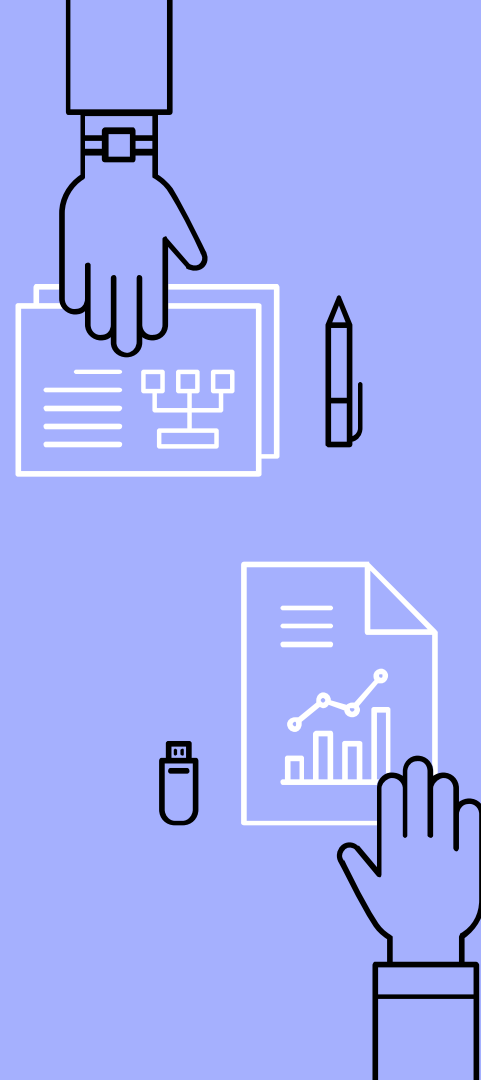
The teacher's area will remain 6 feet from the first row of students.



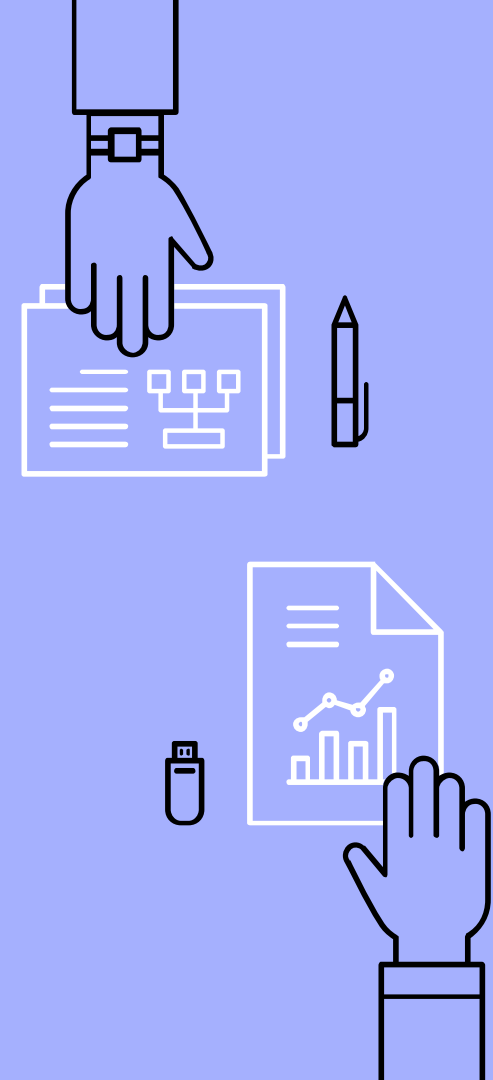
Sample Classroom Set Up



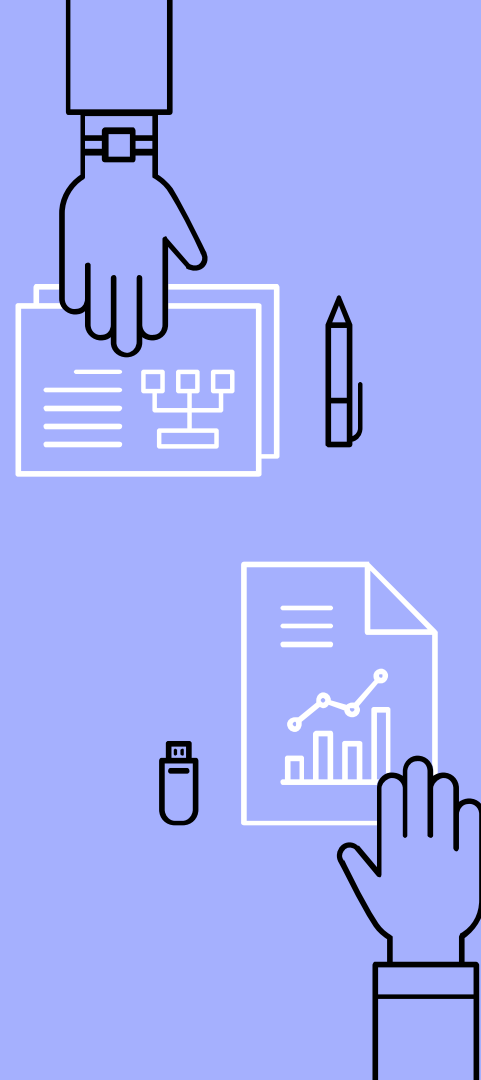
Whitehouse School



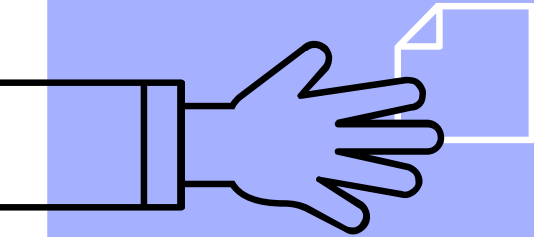
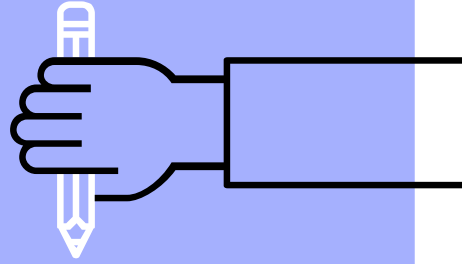
Three Bridges School



Holland Brook School



3. Metrics and reminders

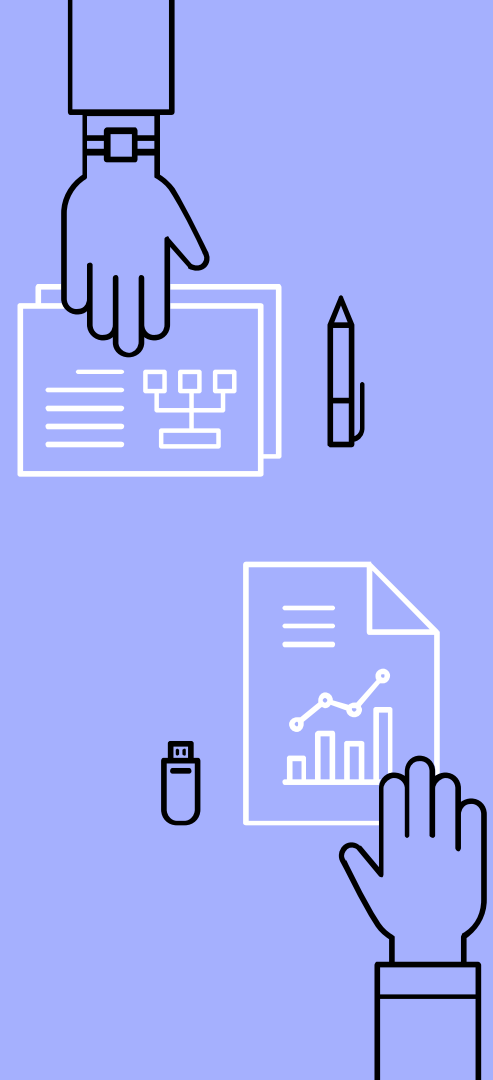


Reminders

This will be a slow, deliberate expansion process.

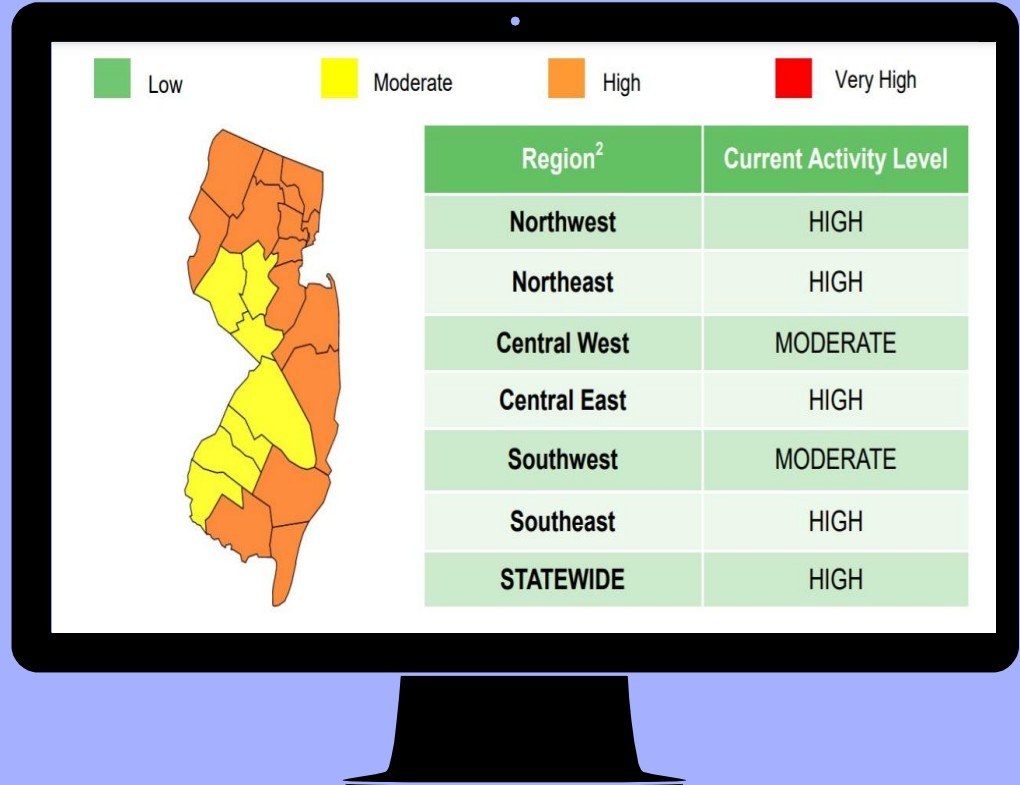
We will use this time in “yellow” to evaluate our efforts, collect data, and make adjustments for student and staff safety.

The timeline for next phases of reopening are to be determined.



The Activity Report

- ▶ From February 6
- ▶ Displays COVID Activity
- ▶ Two regions have turned yellow.
- ▶ On Feb 13 three regions turned yellow.



Reminder of the Matrix/Exclusion Table

- ▶ Displays our response based on color code.
- ▶ Continues to be updated by the DOH.
- ▶ Provides guidance to schools.

Exclusion criteria for persons with COVID-19 or who have COVID-19 symptoms and persons identified as a close contact of someone with COVID-19

	Low Risk	Moderate Risk	High Risk	Very High Risk
COVID-19 positive (viral test), symptomatic or asymptomatic	Exclude according to COVID-19 exclusion criteria . Identify and exclude school-based contacts for 10 days (in absence of testing) from last exposure and report to local health department.	Exclude according to COVID-19 exclusion criteria . Identify and exclude school-based contacts for 10 days (in absence of testing) from last exposure and report to local health department.	Exclude according to COVID-19 exclusion criteria . Identify and exclude school-based contacts for 14 days from last exposure and report to local health department.	Recommend fully remote learning
COVID-19 - compatible symptoms but not tested for COVID-19	If no potential exposure to COVID-19 in the last 14 days, individual can follow NJDOH School Exclusion List . If person has potential exposure to COVID-19 in the last 14 days, exclude according to COVID-19 exclusion criteria .	Exclude according to COVID-19 exclusion criteria .	Exclude according to COVID-19 exclusion criteria .	
COVID-19 - compatible symptoms and negative COVID-19 test (viral test)	Exclude individual through 24 hours after their fever has ended without the use of fever reducing medications and other symptoms improve	Exclude individual through 24 hours after their fever has ended without the use of fever reducing medications and other symptoms improve	Exclude individual through 24 hours after their fever has ended without the use of fever reducing medications and other symptoms improve	
Close contact of staff or student with COVID-19	Close contacts of a COVID-19 case should be excluded for 10 days (in absence of testing) from date of last contact	Close contacts of a COVID-19 case should be excluded for 10 days (in absence of testing) from date of last contact	Close contacts of a COVID-19 case should be excluded for 14 days from date of last contact	

**In all risk levels, students/staff who are household members of a student/staff member who has COVID-19 compatible symptoms and meets [COVID-19 Exclusion Criteria](#) should be excluded from school until the symptomatic individual receives a negative test result. If the symptomatic individual tests positive, the household member will need to quarantine.*

Reminder of the Dashboard

Cases and Trends
"Tab" shows:

Daily new cases
statewide

Cases by county

Transmission rate

Cases and Trends Tab

Daily new cases



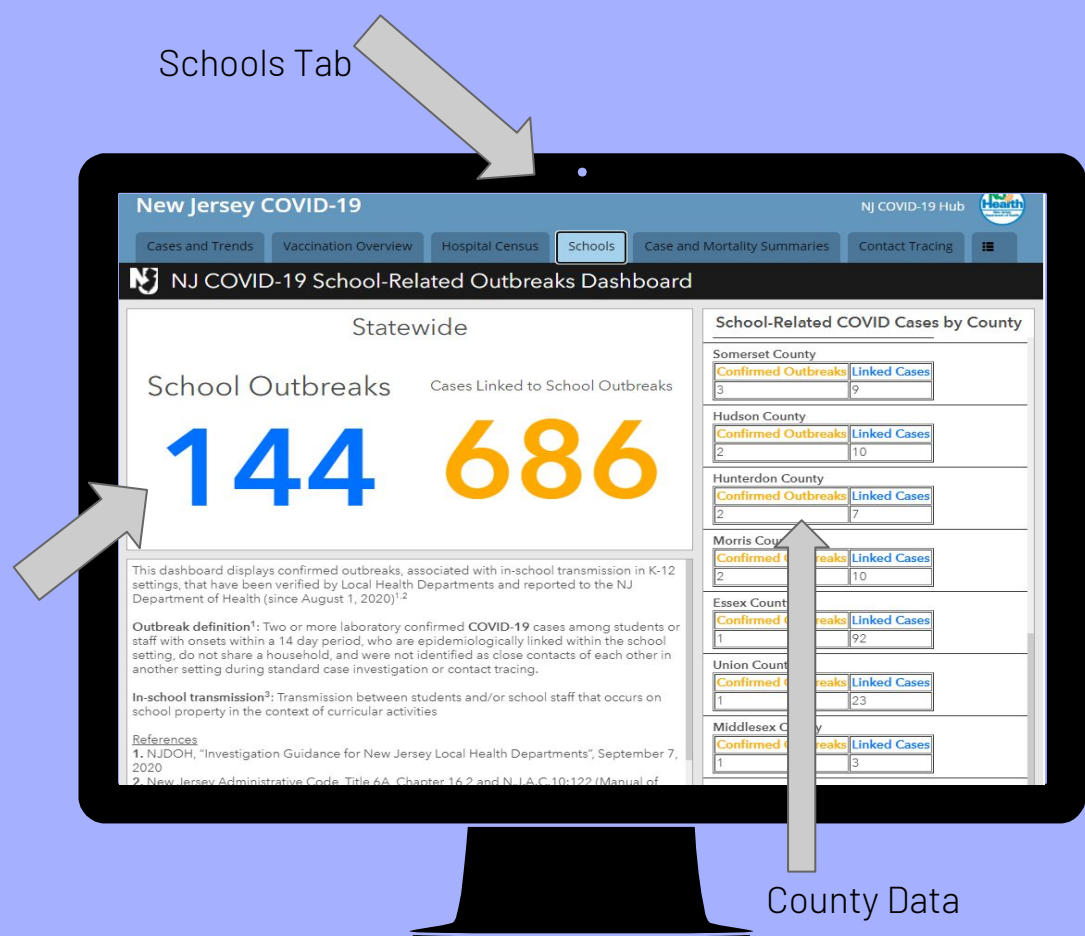
Dashboard

Schools "Tab"
shows:

School outbreaks
statewide

School outbreaks by
county

Cases linked to
schools



THANKS!

Any questions?

