



Readington Township School District Enrollment 2024-2025

Jonathan Hart, Ph.D. Superintendent of Schools
July 22, 2025 Board of Education Meeting

1.

Enrollment Trends and Current Enrollment

Our School Configuration PK-3

Three Bridges School

Grades Preschool through 3



Whitehouse School

Grades Preschool through 3

Our School Configuration 4-8

Holland Brook School

Grades 4 and 5



Readington Middle School

Grades 6, 7, and 8

Preschool Partners



Whitehouse
Prep



Stanton Learning Center



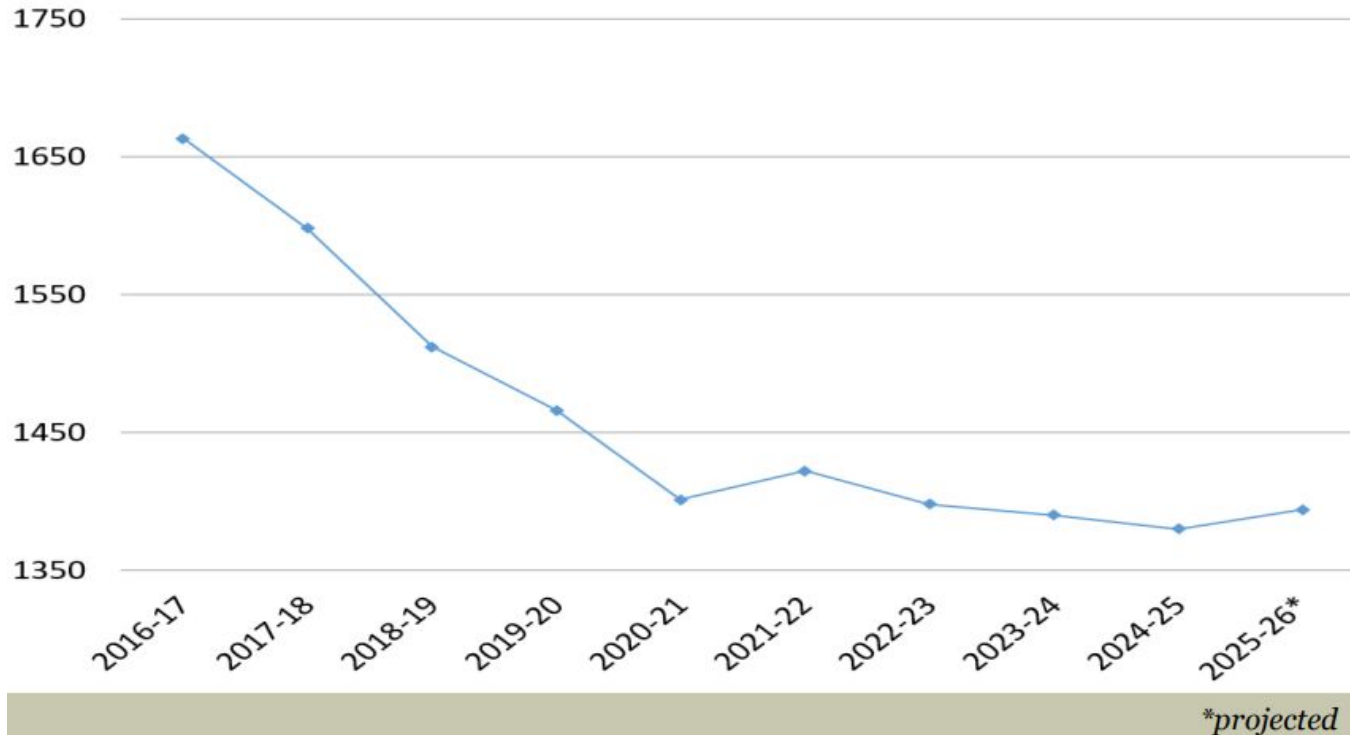
Berry Patch



Global Pioneer

Our Enrollment History K-8

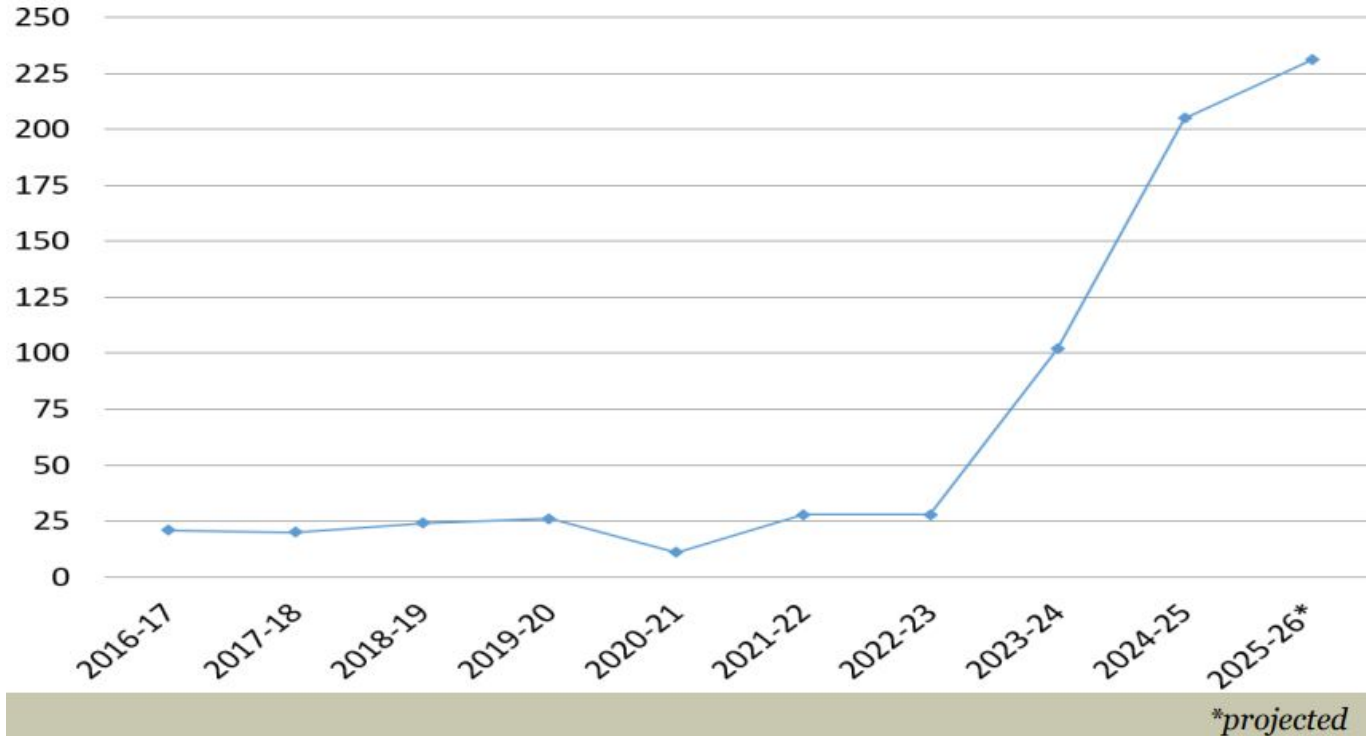
K-8 Student Enrollment



Data taken from
budget presentation
March 2025

Our Enrollment History PreK-8

PreK Student Enrollment



Data taken from
budget presentation
March 2025

Enrollment Forecast 2025-2026

(taken from the March 2025 budget presentation)

Anticipated K-8 enrollment = **1,366**

Anticipated Preschool Enrollment = **231**

Total = **1,597**

Projections and Actual Enrollment as of September each year:

2022-2023 Projected = **1,514** Actual = **1,416**

2023-2024 Projected = **1,506** Actual = **1,403**

2024-2025 Projected = **1,359** Actual = **1,409** (does not include PreK)

2025-2026 Projected = **1,366** Actual (as of July) = **1,399** (does not include PreK)

Year End: May 2024 & 2025 Enrollment

School	May 2024	May 2025
Readington Middle School	493	461
Holland Brook School	307	311
Three Bridges School	289 (30 preschool)	297 (24 preschool)
Whitehouse School	348 (28 preschool)	339 (27 preschool)
Out of District Students	5	9
Provider Preschool	60	162
<u>Total PK-8</u>	<u>1,502 (projected 1,506)</u>	<u>1,579 (projected 1,574)</u>
<u>Total K-8</u>	<u>1,384 (projected 1,464)*</u>	<u>1,417 (projected 1,359)</u>

*Had not projected PreK funding

2.

Housing Development Impact 2024-2025

The Ridge at Readington (Route 22 West)

254 total units

64 affordable units (25%)

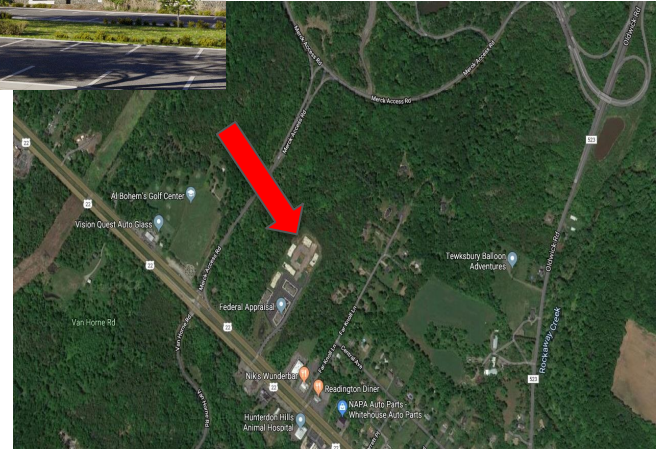
12 one bed, 39 two bed, 13 three bed

190 market rate units (75%)

58 one bed, 132 two bed, 0 three bed

Completion 2023

Total PK-8 Enrollment in
202-2025 was between 35-33
students



Two Additional Developments Anticipated

Camelot (WHS)

192 total units

48 affordable units (25%)

8 one bed, 30 two bed, 10 three bed

144 market rate (75%)

57 one bed, 87 two bed, 0 three bed



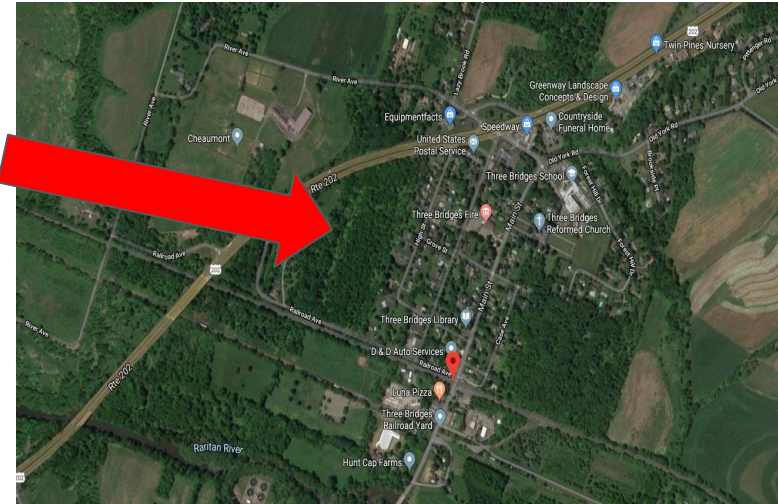
Diaz Property (TBS)

80 total units

80 total affordable units (100%)

15 one bed, 45 two bed, 20 three bed

Clearing commenced



3.

The Redistricting Figures

Phase In Approach: A 5 Year Plan

2021-2022 School Year: Offer families who register for Kindergarten in this redistrict area the option to attend WHS or TBS. All new move-ins would be districted to TBS. (Complete)

2022-2023 School Year: All entering Kindergarten students in the redistrict area would attend TBS. All new move-ins would be districted to TBS. (Complete)

2023-2024 School Year: All entering Kindergarten students in the redistrict area would attend TBS. First grade will continue at TBS. All new move-ins would be districted to TBS. (Complete)

2024-2025 School Year: All entering Kindergarten students in the redistrict area would attend TBS. First and second grade will continue at TBS. All new move-ins would be districted to TBS.

2025-2026 School Year: All entering Kindergarten students in the redistrict area would attend TBS. First, second, third grade will continue at TBS. All new move-ins would be districted to TBS.

Results of Year 4 Implementation: Kindergarten and Newly Enrolled Families

Kindergarten

School	Current Enrollment	Redistricted Students	Impact	Without Redistricting
Whitehouse School	72	11	-11	83
Three Bridges School	80		+11	69

Grades 1-3

There are no additional students in grades 1-3 new to the district who have registered for school.

Total Impact

2022-2023: 12 Kindergarteners and 10 students in other grades were redistricted to TBS

2023-2024: 11 Kindergarteners and 1 student in other grades were redistricted to TBS

2024-2025: 12 Kindergarteners and 0 students in other grades were redistricted to TBS.

2025-2026: 11 Kindergarteners and 0 students in other grades were redistricted to TBS.

Total over 4 years: 57 (all K-3 students)

School	Enrollment with Redistricting	Enrollment without Redistricting
TBS (K-3)	292	235
WHS (K-3)	301	358

4.

Where does my child
attend elementary school?

Our Website

SPOTLIGHT



Draft Map

Search Feature

The screenshot displays a web-based map interface. At the top left, a red header bar contains a menu icon, a profile icon labeled 'M', the title 'Readington Public Sc...', and a search icon. A green arrow points from the 'Search Feature' text to the search icon. Below the header, a sidebar on the left provides instructions: 'Use the search icon to enter your address and select it. If your address is in the red area, your children will attend Whitehouse School. If your address is in the blue area, your children will attend Three Bridges School.' It also shows '35 views', 'Published 22 minutes ago', and a 'SHARE' button. Below this, a legend indicates 'Readington Public Schools - WHS/TBS Dist...' with a red house icon for 'WHS District' and a blue house icon for 'TBS District'. The main map area shows a geographical view of the Readington area, with two distinct colored regions: a red-shaded area in the northeast representing the Whitehouse School District and a blue-shaded area in the southwest representing the Three Bridges School District. Various towns and landmarks are labeled on the map, including Bethlehem Township, Clinton, Lebanon, and Readington Township. A notification at the top of the map states 'This map was created by a user. Learn how to create your own.'

Thanks!

Any questions?

You can find me at:

jhart@readington.k12.nj.us