



Readington Township School District Enrollment 2024-2025

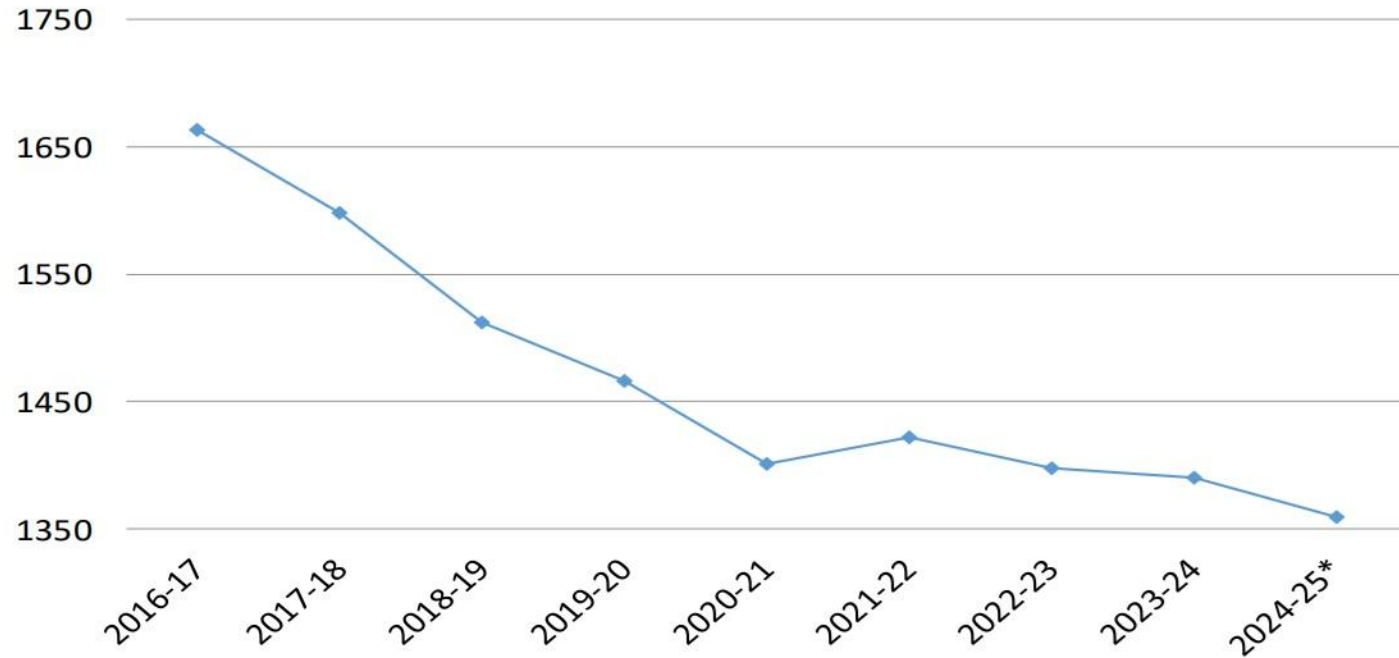
Jonathan Hart, Ph.D. Superintendent of Schools
July 23, 2024 Board of Education Meeting

1.

Enrollment Trends and Current Enrollment

Our Enrollment History K-8

Student Enrollment



Data taken from
budget presentation
March 2024

**projected*

Enrollment Forecast 2024-2025

(taken from the March 2024 budget presentation)

Anticipated K-8 enrollment = **1,359**

Presumes:

- ▷ **134** Kindergarten students

Anticipated Preschool Enrollment = **215**

Total = **1,574**

Comparisons:

September 2022-2023 enrollment = **1,416**

September 2023-2024 enrollment = **1,403**

Our School Configuration PK-3

Three Bridges School

Grades Preschool through 3



Whitehouse School

Grades Preschool through 3

Our School Configuration 4-8

Holland Brook School

Grades 4 and 5



Readington Middle School

Grades 6, 7, and 8

May 2024 Enrollment Report

School	Enrollment
Readington Middle School	493
Holland Brook School	307
Three Bridges School	289 (30 preschool)
Whitehouse School	348 (28 preschool)
Out of District Students	5
Provider Preschool	60
<u>Total PK-8</u>	<u>1,502 (projected 1,574)</u>
<u>Total K-8</u>	<u>1,384 (projected 1,359)</u>

2.

Housing Development Impact 2023-2024

The Ridge at Readington (Route 22 West)

254 total units

64 affordable units (25%)

12 one bed, 39 two bed, 13 three bed

190 market rate units (75%)

58 one bed, 132 two bed, 0 three bed

Completion 2023

Total PK-8 Enrollment in
2023-2024: 40-41



Two Additional Developments Anticipated

Camelot (WHS)

192 total units

48 affordable units (25%)

8 one bed, 30 two bed, 10 three bed

144 market rate (75%)

57 one bed, 87 two bed, 0 three bed



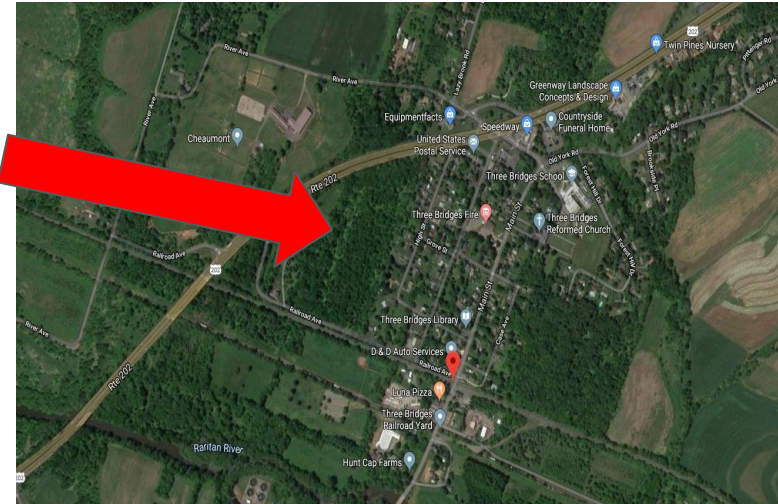
Diaz Property (TBS)

80 total units

80 total affordable units (100%)

15 one bed, 45 two bed, 20 three bed

Developer has been identified



3.

The Redistricting Project

Phase In Approach: A 5 Year Plan

2021-2022 School Year: Offer families who register for Kindergarten in this redistrict area the option to attend WHS or TBS. All new move-ins would be districted to TBS. (Complete)

2022-2023 School Year: All entering Kindergarten students in the redistrict area would attend TBS. All new move-ins would be districted to TBS. (Complete)

2023-2024 School Year: All entering Kindergarten students in the redistrict area would attend TBS. First grade will continue at TBS. All new move-ins would be districted to TBS. (Complete)

2024-2025 School Year: All entering Kindergarten students in the redistrict area would attend TBS. First and second grade will continue at TBS. All new move-ins would be districted to TBS.

2025-2026 School Year: All entering Kindergarten students in the redistrict area would attend TBS. First, second, third grade will continue at TBS. All new move-ins would be districted to TBS.

Results of Year 3 Implementation: Kindergarten and Newly Enrolled Families

Kindergarten

School	Current Enrollment	Redistricted Students	Impact	Without Redistricting
Whitehouse School	74	12	-12	86
Three Bridges School	73		+12	61

Grades 1-3

There are no additional students in grades 1-3 new to the district who have registered for school.

Total Impact

2022-2023: 12 Kindergarteners and 10 students in other grades were redistricted to TBS

2023-2024: 11 Kindergarteners and 1 student in other grades were redistricted to TBS

2024-2025: 12 Kindergartens and 0 students in other grades were redistricted to TBS.

Total over 3 years: 46

School	Enrollment with Redistricting	Enrollment without Redistricting
TBS (K-3)	259	213
WHS (K-3)	320	366

4.

Where does my child
attend elementary school?

Draft Map

Search Feature

The screenshot displays a web-based map application for Readington Public Schools. The interface is divided into three main sections:

- Header:** A red bar at the top contains a menu icon, the school district name "Readington Public Schools" with a user profile icon, and a search icon. A green arrow points to the search icon with the label "Search Feature".
- Left Sidebar:** Contains instructions on how to use the search function to determine school attendance based on address location (red area for Whitehouse School, blue area for Three Bridges School). It also shows the number of views (35) and the time since publication (22 minutes ago), along with a "SHARE" button.
- Main Map:** A map of the Readington area showing school districts. The "WHS District" is highlighted in red, and the "TBS District" is highlighted in blue. Various landmarks, towns, and roads are labeled on the map.

Thanks!

Any questions?

You can find me at:

jhart@readington.k12.nj.us